



ARIN Technical Services

Mark Kusters
Chief Technology Officer

How Many Records Do We Manage?

- Networks
 - Direct
 - Indirect
 - ASNs
 - Reverse DNS Delegations
 - Organizations
 - Org IDs
 - Customers
 - Points of Contact
 - Web Users
- ... for a grand total of _____ ?

Almost 8 Million!

- Networks: 3,069,469
 - Direct: 57,764
 - Indirect: 3,011,705
 - ASNs: 25,920
 - Reverse DNS Delegations: 606,584
 - Organizations: 3,183,197
 - Org IDs: 733,927
 - Customers: 2,449,270
 - Points of Contact: 725,975
 - Web Users: 121,134
- ... for a grand total of **7,732,279**

Major Technical Service Areas

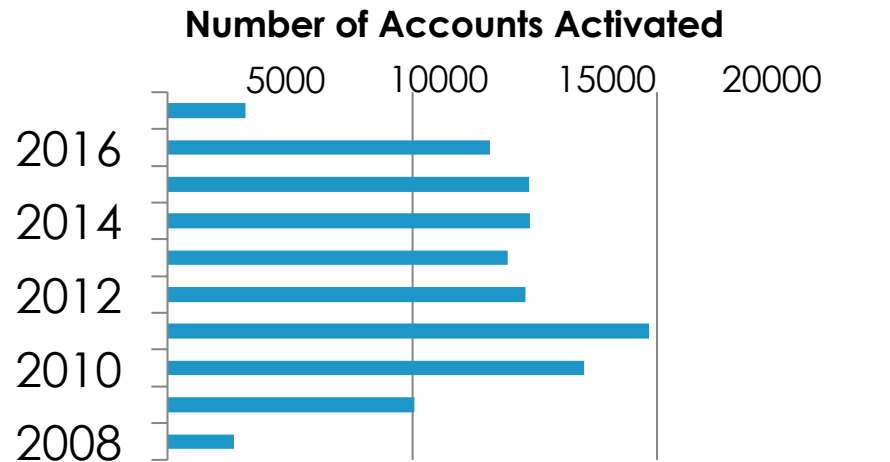
- Core Registry Functions (ARIN Online)
 - Resource Registration & Management
 - Whois
 - Reverse DNS
- New Services
 - Web-based reassignment management (SWiP-EZ)
 - DNSSEC & RPKI
 - WhoWas
 - RDAP
 - RESTful Interfaces
 - Operational Test & Evaluation Environment (OT&E)
- Technical Support

Core Registry Services – ARIN Online

- Registering ASNs and IPv4/IPv6 blocks
 - Including reassignments and reallocations
- Transferring ASNs and IPv4/IPv6 blocks
- Managing org & contact information
- Managing reverse DNS & RPKI
- Bulk Whois and WhoWas Reports
- Invoices and Bill Payment
- All now available via ARIN Online

ARIN Online Usage

123,917 accounts activated since inception through Q1 of 2017

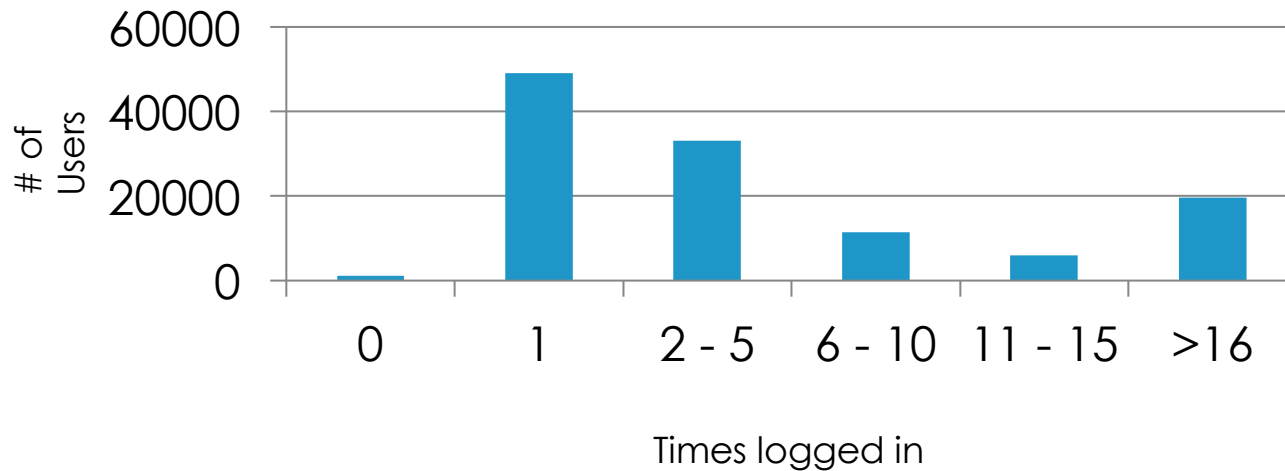


* Through Q1 of 2017

Active Usage of ARIN Online

Logins from inception through Q1 of 2017

Logins



Linking?

- Way of managing resources put into place before ARIN Online was unveiled
- A good set of videos at
 - <https://www.youtube.com/user/teamarin>
 - Teaches you how to:
 - Create an ARIN Online account
 - Create and manage POCs and Org IDs
 - Request transfers

Ask ARIN and Message Center

- Ask ARIN
 - A way to ask ARIN staff a question on the web
- Message Center
 - Tracks ticketed requests
 - Ticketed requests are things like resource requests and correspondence, RPKI notifications, reports

Web-Based Reassignment Management

- Manage customer reassignments (SWIPs) via ARIN Online
- Comprehensive reassignment report
 - Generates a spreadsheet of all reassignments made from your space along with holes (unassigned space)
- Recommended for ISPs managing a small number of records

Billing

- Pay bills
- Calculate fees
- View current and past-due invoices

WhoWas

- Spreadsheet with registration history for one either an ASN or IP address
- Requested by the community
- Common uses include
 - Researching the history of an IPv4 block prior to entering into a transfer
 - Investigating possible unauthorized changes
 - Law enforcement

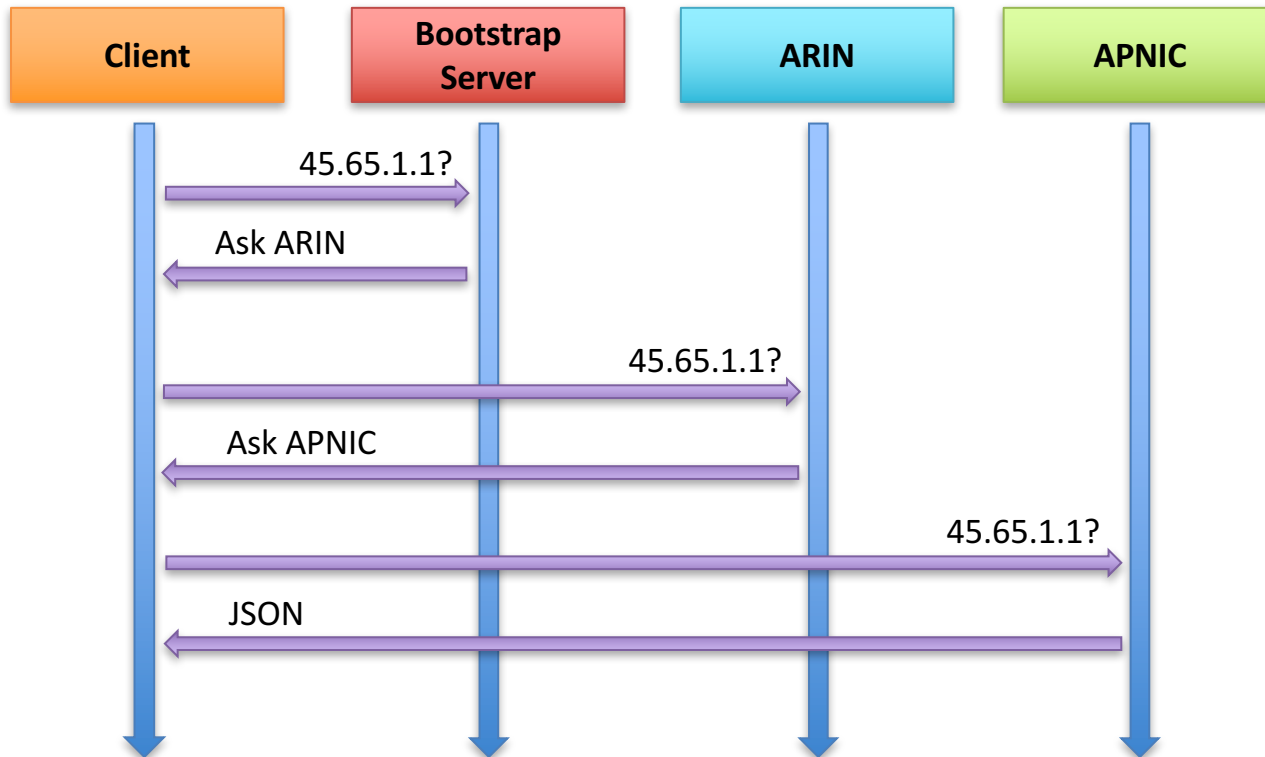
DNSSEC & RPKI

- Security for core Internet protocols
- Will be talking about RPKI later

Registration Data Access Protocol (RDAP)

- Designed by the IETF to replace Whois
 - Whois was designed for humans to read, not for machines to interact with
- Provides standardized HTTP-based RESTful JSON responses
 - “Plays well with machines”
- Can offer referral responses
 - If you ask ARIN for a record that’s held by another RIR, we point you to it

RDAP In Action



REST Services



- Reg-RWS
 - Reassignments (SWiP)
 - Reports
 - DNS / RPKI Management
- Whois
 - RDAP
 - Whois-RWS

What is **REST**?

- **RE**presentational **S**tate **T**ransfer
- Uses HTTP & URLs to create, read, update, and delete data
- Widespread industry adoption
 - Amazon S3
 - Yahoo
 - Google
 - etc ...

The BIG Advantage of REST

- Easily understood
 - Any modern programmer can incorporate it
 - Can look like web pages
- Re-uses HTTP in a simple manner
 - Many, many clients
 - Other HTTP advantages
- This is why it is very, very popular with Google, Amazon, Yahoo, Twitter, Facebook, YouTube, Flickr, ...

What does it look like?

Who can use it?

Where the data is.

What type of data it is.

The ID of the data.

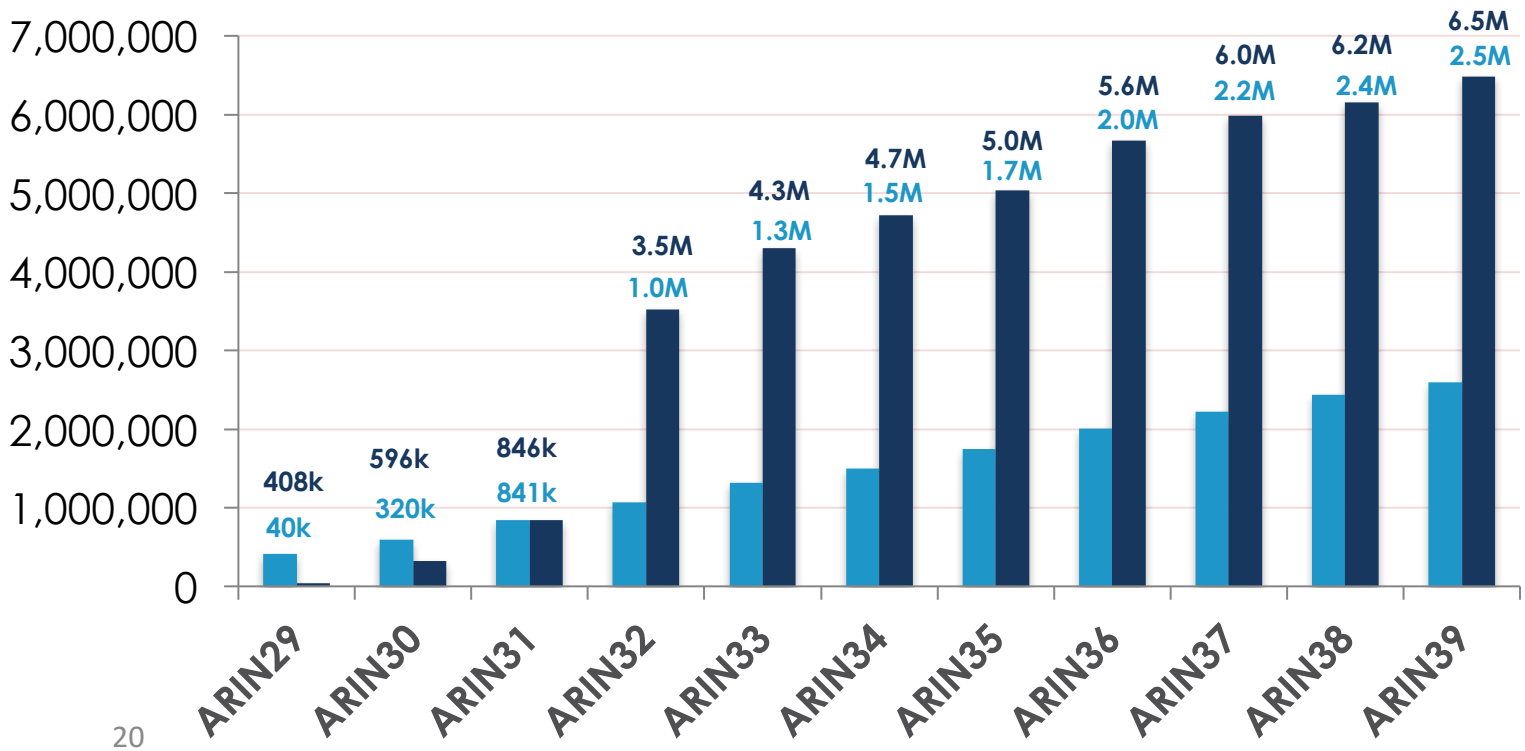


<http://whois.arin.net/rest/poc/KOSTE-ARIN>

*It's a standard URL. Anyone can use it.
Go ahead, put it into your browser. We dare you.*

Reg-RWS Transactions

(cumulative – *restful/templates*)



Using ARIN's RESTful Services

- APIs documented on our web site
- Build your own tools
- Some commercial IP address management vendors integrate to ARIN via REST
- Some have shared their tools with others
- Repository for these tools
 - <https://github.com/arineng>
 - <http://projects.arin.net>
- Useful for ISPs managing lots of records

Where can more information on REST be found?



RESTful Web Services

- O'Reilly Media
- Leonard Richardson
- Sam Ruby

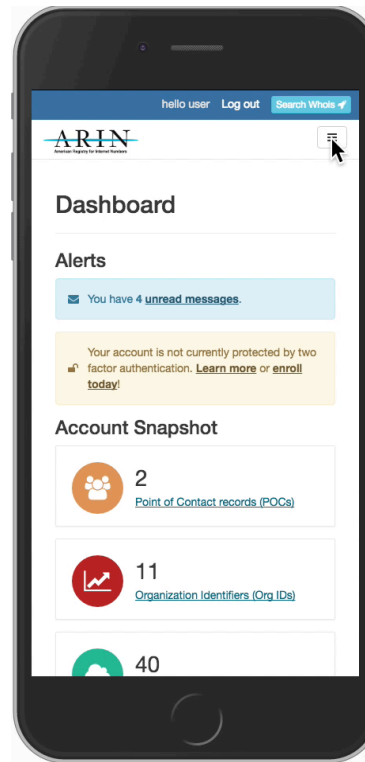
Operational Test & Evaluation (OT&E)

- Lots of people test in production
 - Is not the best place to test
 - Things do get stuck – may impact others
 - Operational Test & Evaluation
- Goodness of OT&E
 - Place to test code/processes
 - All services now under ote.arin.net except email
 - Need to register to participate
 - <https://www.arin.net/resources/ote.html>

Technical Support

- Ask ARIN
- Phone Help Desk
 - 7AM - 7PM ET M-F
 - +1.703.227.0660
- Email support via hostmaster@arin.net
- arin-tech-discuss mailing list
 - Make sure to subscribe
 - Archives contain useful information

In the works... a new design!



Q&A

