

Registration Services Department

Leslie Nobile
Director



Staff

- Principal Resource Analyst:

- ⇒ Cathy Clements



- Technical Specialist:

- ⇒ David Huberman

- Senior Resource Analyst:

- ⇒ Chad Eastman

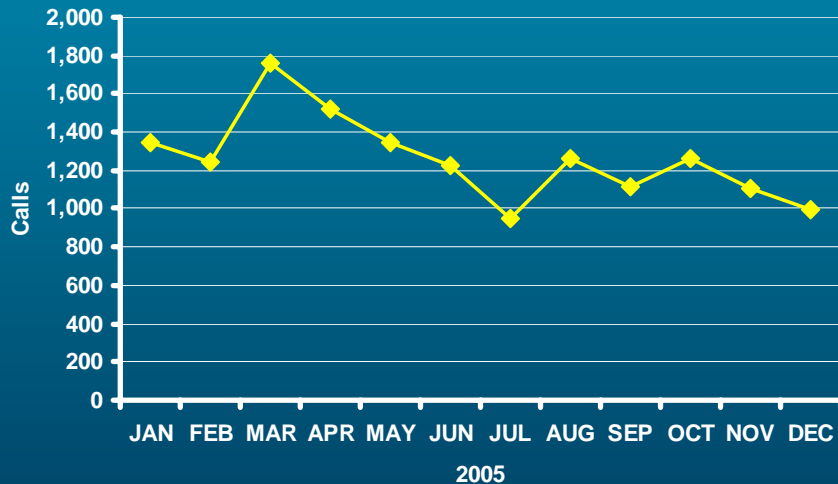
- Resource Analysts:

- ⇒ Doreen Maraffa
- ⇒ Stephen Middleton
- ⇒ Jon Worley
- ⇒ Jeff Havens
- ⇒ Sue Dobert

Did You Know that in 2005...

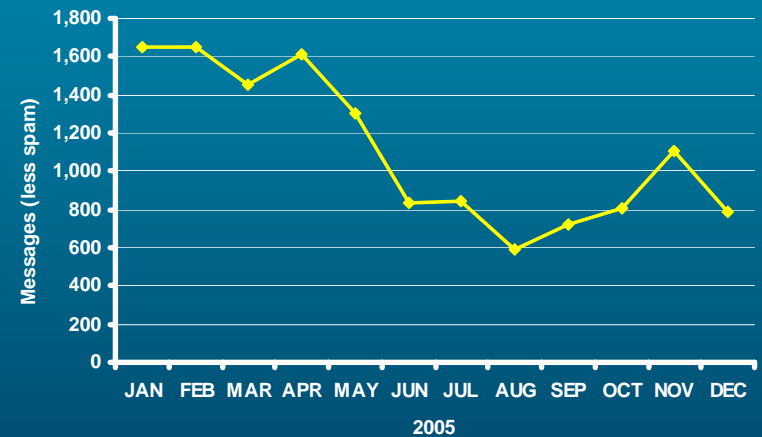
The Registration Services Help Desk Received...

Telephonic



Total Phone Calls = 15,136

Non Template Email



SPAM Rate= 92%

Hostmaster E-mail = 173,131

Total Ticketed E-Mail = 873,590

Registration Services...

Processed	
Total Templates	586,805
Monthly Average	48,900

Allocated and Assigned			
Type	Requests	Approved	/24s Issued
ISP	1,774	59%	188,159
End-User	539	32%	2,803
Total /8s: 2.91			

So where is all the IPv4 space going...?

New ISP Subscriber Accounts

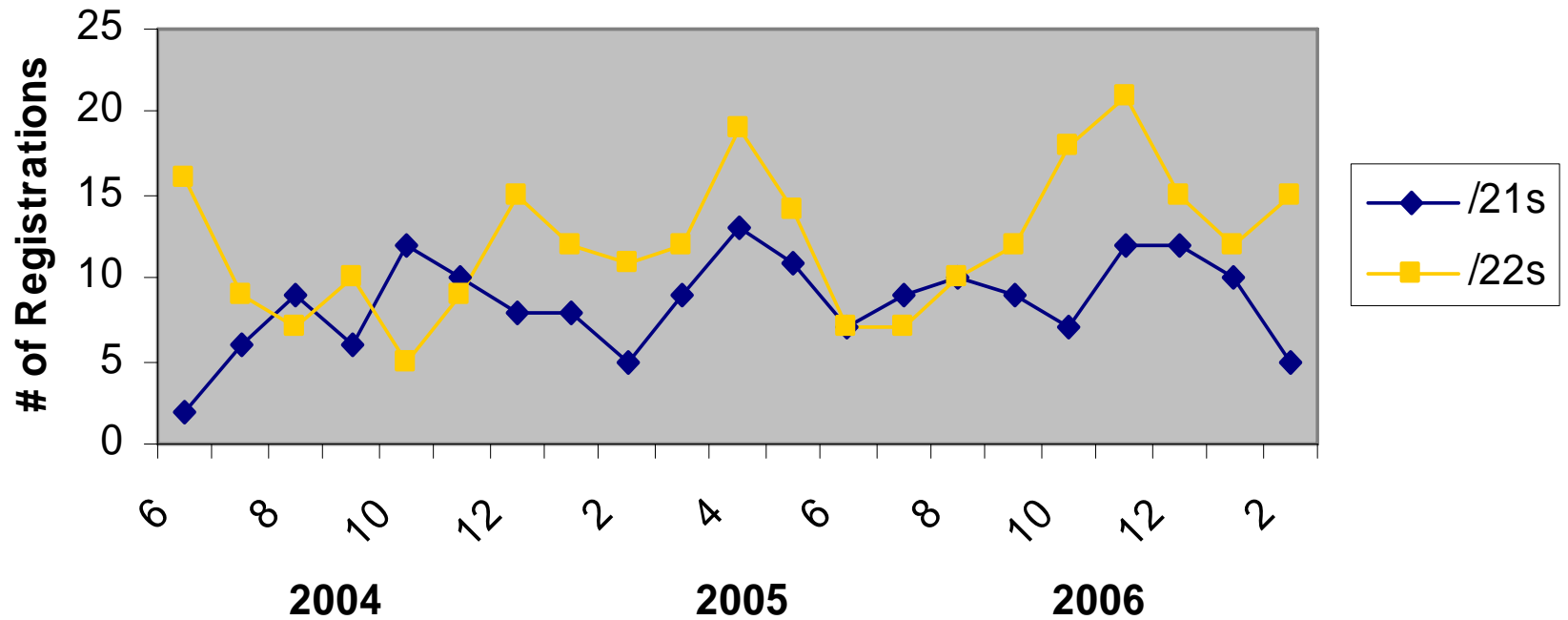
	2002	2003	2004	2005
New Accounts	325	274	309	319
Year to Year Growth		-15.69%	12.77%	3.24%
Growth vs 2002			-4.9%	-1.8%

New End User Accounts

	2002	2003	2004	2005
New Accounts	95	123	150	156
Year to Year Growth		24.24%	21.95%	4%
Growth vs 2002			51.5%	57.6%

And in Particular, the /21s and /22s....?

/21 and /22 Distribution by Month



Total /21s = 179
Total /22s = 257

From an Economies of Scale Perspective...

- **67,307,517 /32s to 1,043 Orgs**
 - ⇒ 58,072,926 /32s to largest 43 Orgs
 - ⇒ 55,555,625 /32s to largest 20 Orgs
 - ⇒ 51,719,096 /32s to largest 11 Orgs
 - ⇒ 15,588,421 /32s to ALL OTHER ORGS!!

***July 1, 2004 through June 30, 2005**

What About IPv6 ?

Some IPv6 Growth

	2004	2005	2006*
New requests	73	110	19
/32s issued	44	58	13
Approval Rate	60%	52%	68%
Total by Country	U.S.=105 CA=16	U.S.=159 CA=19 BM=1	U.S.=170 CA=21 BM=1

***Through Mar 31, 2006**



Questions?